



**Warren County
Conservation District**

210 North Drive, Suite E
Warren, PA 16365
Phone: 814-726-1441
Fax: 814-406-0005
Email:
jfroman@wccconservation.net
www.wccconservation.net

Our mission is to improve the environmental quality of Warren County by promoting the wise use, enhancement, and understanding of natural resources.

IN THIS ISSUE:

	Page
Tree Seedling & Plant Sale	1
Important Information	2
Tree & Plant Descriptions.....	3-4
Teacher Naturalist Training	5
Dirt & Gravel Roads	5
Children's Nature Camp	6
Youth Conservation Camp	7
Penn Soil RC&D Relocates.....	8
Bits & Pieces	8
Winterfest Collectible Coin	9
Spring Time Poem.....	9
Manure Management	9
Answers to Puzzle & Trivia.....	9
Kid's Conservation Corner	10
Tree & Plant Order Form.....	11



Tree Seedling & Plant Sale

April 20 & 21, 2012
Order Deadline: March 30, 2012

Supports Conservation Education
Programs in Warren County



The majority of the trees and bushes offered can be used to provide habitat and food for wildlife, erosion control, riparian buffers, and other conservation practices.

PENN STATE MASTER GARDENERS WILL BE BACK AGAIN THIS YEAR TO PROVIDE VALUABLE ADVICE AND INSTRUCTIONS ON PLANTING AND GROWING TREES AND PLANTS.

Also in this issue:

Children's Nature Camp Application

Youth Conservation Camp Application

(Camp will be held earlier this year!!)

If you have any questions on any of the District programs, please contact the District office at 814-726-1441.

Thank you for your continued support of conservation in Warren County.

**WARREN COUNTY
CONSERVATION DISTRICT**

Board of Directors

Dave Miller, Chairman
Larry Upton, Vice Chairman
Dean Johnson, Treasurer
Robert Sleeman
Lee Curtis
Dick Smith
John Hagberg
Steve Vanco, Commissioner

Associate Directors

Dave Trimpey
Ralph Miller

Conservation District Staff

Heather Wilcox, District Manager
Joshua Dean, District Technician
Jean Gomory, Watershed Specialist
Judy Froman, Office Manager

Natural Resources

Conservation Service (NRCS)

Laura Ayers, District Conservationist
Ralph Miller, Program Assistant
Mark Orlic, Program Assistant

Board Meetings are held the third
Tuesday of each month at 210 North
Drive, Suite E, Warren, PA

**Additional copies of this
newsletter are available at
www.wcconservation.net**

The U.S. Department of Agriculture (USDA) prohibits discrimination in all its programs and activities on the basis of race, color, national origin, gender, religion, age, disability, political beliefs, sexual orientation, and marital or family status. (Not all prohibited bases apply to all programs.) Persons with disabilities who require alternative means for communication (Braille, large print, audiotape, etc.) should contact USDA TARGET Center at 202-720-2600 (voice or TDD).

To file a complaint of discrimination, write USDA, Director, Office of Civil Rights, Room 326W, Whitten Building, 14th and Independence Avenue, SW, Washington, DC 20250-9410 or call 202-729-5964 (voice or TDD). USDA is an equal opportunity provider and employer.

**FEATURING A LARGE SELECTION
OF NATIVE PLANTS**

Tree Seedling & Plant Sale
Important Information

TREE/PLANT ORDER DEADLINE: March 30, 2012

SEND PRE-PAID ORDERS TO:

Warren County Conservation District
210 North Drive, Suite E
Warren, PA 16365

TREE DISTRIBUTION:

Friday, April 20, 12:00 noon to 6:00 p.m.
Saturday, April 21, 9:00 a.m. to 12:00 noon
at the former TAWC Garage (Route 6) in Starbrick

**Postcards or an e-mail will be sent to those who order
as a reminder of the pick-up date and time.**

DISTRICT DISCLAIMER:

**BECAUSE WE CANNOT CHECK PLANTING LOCATION
NOR GUARD AGAINST IMPROPER HANDLING &
STORAGE, THE CONSERVATION DISTRICT WILL NOT
BE RESPONSIBLE FOR THE TREES AFTER THEY ARE
PICKED UP.** The District makes every attempt to locate the best nursery stock for our growing zone to sell at our annual sale. Whether the seedling survives is up to you. Many factors, such as improper handling, storage, planting, soil conditions, weather, and pest controls dictate whether a tree seedling will survive or not. **The District cannot replace or reimburse customers for errors beyond our control. The District also cannot guarantee the availability or size of trees or plants ordered from suppliers.**

E&M ENGINEERS AND SURVEYORS

SERVING PENNSYLVANIA & NEW YORK SINCE 1946

PUBLIC WORKS - SEWAGE - WATER WORKS

SUBDIVISIONS - BRIDGES - STUDIES AND REPORTS

RECREATION - ROADS - DAMS - STRUCTURAL

SURVEYING - BOUNDARY AND TOPO

24 Derrick Road—Bradford, Pennsylvania 16701

814-362-5546 - 800-522-7916

www.emengineers.com

Tree & Plant Descriptions

Mix & match any
per 3, per 5, per 10,
per 50, or per 100
items with like prices.

Conifers

Douglas Fir - Excellent demand as a Christmas tree or an ornamental. Extremely fast growth, superb needle retention and soft, 1" blue-green needles make Douglas the favorite tree for many growers. Prefers, fertile, well-drained, light soil with full sun.

Norway Spruce - Fastest growing spruce. Short-needled tree with deep green color. Good demand for Christmas tree, ornamental, and reforestation use.

Potted Perennial Plants

Potted perennial flowers are sold in one gallon containers. ALL THE POTTED PLANTS ARE NATIVE TO PENNSYLVANIA OR THE U.S. OR ARE HYBRIDS OF NATIVE PLANTS.

Purple Coneflower - (*Echinacea purpurea*) A popular and attractive perennial with purple, drooping rays surrounding a spiky, brownish central disk. Attracts butterflies and hummingbirds. Plant in full sun or part shade. Grows to 36" high. Zone 3.

False Sunflower, AKA Oxeye Daisy - (*Heliopsis helianthoides* 'Summer Sun') Semi-double golden yellow flowers all summer. Tough plant that is easy to grow. It will produce arm loads of flowers all summer long and never ask for decent soil or proper care. Bees and butterflies will feed on the nectar. Plant in full sun. Grows to 30-36" high. Zone 4.



Red Cardinal Flower - (*Lobelia cardinalis*) Bright red flowers on tall spikes in late summer. Attracts hummingbirds and butterflies, but not cardinals. Provides late summer bloom to the perennial border, wild garden, native plant garden or woodland garden. Excellent for butterfly or bird gardens. Also effective near ponds or streams. Needs constant moisture. Plant in full sun to part shade. Grows to 30" high. Zone 4.

Fruit Trees

All of the apple trees are semi-dwarf. These trees will grow to be 12 to 15 feet tall. Normally they bear fruit in 2-3 years. Cross pollination is necessary for fruit production for apple trees. Another compatible variety must be within 300 yards for cross pollination to occur. **Both of the apple varieties below will cross pollinate each other.**

Macoun Apple - Macoun apples are a cross between the McIntosh and Jersey Black varieties. A dessert-type apple exhibiting similar characteristics to McIntosh. Macoun is recognized in the Northeast for its high quality. Flesh is white, firm and juicy. It has been regarded to be the finest eating apple in the world. Tree is upright in habit requiring aggressive thinning to maintain annual cropping. Zones 4-8.

Fulford® Gala Apple - A strain of Gala originating in Hastings, New Zealand. The Fulford strain matures three to four days ahead of other Gala strains. Color is a bright orange-red with yellow background. Fulford Gala is a larger sized Gala, with a blush red rather than stripe. It has a mild but pleasing taste and texture. Zones 4-8

Reliance Peach - Well known for its cold hardiness, this variety is ideal for the home garden. The fruit is medium size and freestone with a dull blush over greenish-yellow background. Good for canning and freezing. Self-pollinating—does not need another variety for pollination. Plant in full sun. Zones 4-8.

Thank you Tidioute Oil
Company for sponsoring
the 2011 Farm of the
Year Award.

Fruit Bushes

Most plantings of blueberries will produce satisfactory crops when only one cultivar is included, but pollen from other cultivars will generally result in increased yields, larger fruits, and earlier ripening.

Bluecrop Blueberries - A variety known for its extreme hardiness, vigor, and consistent production. Fruit is light blue, firm, and produced in large clusters. They are good for eating fresh, or in pies and jams.

Bluejay Blueberries - This is an early mid-season blueberry that is very winter hardy. The medium sized berry is light blue in color and has a pleasant mild flavor.



Trees & Shrubs

Old Fashioned Lilac - Native to southern Europe. Dense, vigorous growth to 15 feet. Spread: 6-10 feet. Masses of very fragrant, light lavender flowers in late spring. Old flowers should be cut off as soon as flowers fade. Makes a wonderful flowering screen. An old fashioned favorite. Requires full sun, transplants easily, prefers well-drained, slightly acidic soil. Space 6 feet apart. Zones 3-7.

American Plum - American plum, is a deciduous large shrub or small tree with a broad crown, reaching heights up to 15 feet. Fruits are red to yellow, almost globular edible plums about 1 inch in diameter. Flowers are white. The shrub is winter-hardy, but intolerant of shade and drought. American plum is highly important as wildlife cover and food. Twigs and foliage provide a highly preferred browse for whitetail and mule deer. The thorny growth and suckering characteristics should be considered before planting this species near a recreation area. It can be used for screening and natural barriers. The fruit is used widely for making jams and jellies. Zones 3-8.

Sugar Maple - An attractive maple that is native and can be used for dual purposes. A handsome tree for shade. Mature trees produce sap in spring that can be used for making delicious maple syrup and sugar. Wood of these trees is hard maple, valuable for floors and furniture making. Mature height approximately 70-100 feet. Sugar maple sometimes called hard maple or rock maple, is one of the largest and more important of the hardwoods. Sugar maple grows on sands, loamy sands, sandy loams, loams, and silt loams, but it does best on well-drained loams. It does not grow well on dry, shallow soils and is rarely, if ever, found in swamps. Zones 3-8.

Pin Oak - The best known oak for street and ornamental planting. Forms a symmetrical pyramidal head with drooping branches. Beautiful green foliage of leaves 3-5" wide with five pointed lobes, bright green leaves turning yellow to radiant red in autumn. Prefers moist, fertile, acidic, well-drained soils. A fast-growing tree with light to dark grayish-brown bark. The acorns are small with a thin, shallow cap. Plant in full sun with adequate room to develop. Mature height of 75-80 feet. Zones 4-8.

Miscellaneous



Used Tree Shelters - These shelters have been used, but still have lots of life to them. Tree shelters offer protection from animals, wind, equipment, and chemical sprays. The shelters also provide a greenhouse environment which promotes seedling growth and reduces planting stress. Does not include stake or ties.

*See Page 11 for Order Form
Order Deadline is March 30*

JOHN ALLEN EXCAVATING, INC.

General Excavation • Demolition

Site Preparation • Ponds

Gravel Products

John Allen, President (814) 489-7830

Sugar Grove, PA 16350 Fax (814) 489-3723

Teacher Naturalists Training



Take a hike

Do you like working with kids? Do you want to learn more about nature? The Warren County Conservation District is considering the possibility of holding a Teacher Naturalist training in the spring of 2012. This course will be one weekday for 8 – 10 weeks and consist of in-class and outdoor sessions. Session topics include agriculture, soils, forestry, and water. Now don't let the term "teacher naturalist" throw you.

You don't have to be a teacher

Do you want to learn more about



Help with crafts

to participate, nor do you need a degree in environmental studies. All you need is a love of learning, nature, and a desire to inspire our young ones to learn about, and take care of, this marvelous planet that is our home.

The Conservation District will expect volunteers who complete this training to help with summer conservation camps held the second and third weeks of July. There is also an opportunity to learn some in-class education programs available to local schools.

Currently the Conservation District is gauging interest for this program and training dates will be announced at a later time. If you feel you may want to participate in this worthwhile volunteer program contact the District's Watershed Specialist, Jean Gomory.



Go on a canoe trip

Warren County Dirt & Gravel Roads Program Overview

In Pennsylvania, non-point source pollution is responsible for 88% of all impaired streams. The dust and sediment pollution resulting from the poor maintenance of the more than 27,000 miles of dirt and gravel roads in the Commonwealth has been shown to be a large contributor to this pollution.

In order to minimize the negative environmental impacts from dirt and gravel roads, the Warren County Conservation District entered into an agreement in 1997 with the PA State Conservation Commission to coordinate the Dirt & Gravel Road Maintenance Program (DGRP) in Warren County. The program makes up to \$4 million available state-wide to fund safe, efficient, and environmentally sound maintenance of dirt and gravel roads.

The DGRP funds are appropriated through the PA State Conservation Commission to County Conservation Districts. A local Quality Assurance Board, with representation from the District, PA Fish & Boat Commission and the USDA Natural Resources Conservation Service, determines which projects are funded through a simplified grant application process.

In 1998, the Conservation District completed an assessment of all dirt and gravel roads in Warren County. The assessment identified approximately 500 various sites which are causing sediment pollution to waters of the Commonwealth. Improvements funded under the program must be at a site listed from the assessment. Since the creation of the program in 1997, the Warren County Conservation District has funded the improvement of 100 work sites in 14 different municipalities, in Warren County, totaling over 2 Million Dollars. In 2011/2012 the District will receive an allocation of \$167,000 to fund Dirt & Gravel Road Projects in Warren County.

Following is a list of the Townships that have participated in the program: Brokenstraw, Columbus, Deerfield, Eldred, Elk, Farmington, Freehold, Mead, Pittsfield, Sheffield, Southwest, Spring Creek, Sugar Grove, and Triumph. For more information about the program and the different practices used you can visit The Penn State Center for Dirt & Gravel

Children's Nature Camp

July 9-10, 2012 for 6-7 year olds (CNC I)

July 12-13, 2012 for 8-9 year olds (CNC II)

July 17-19, 2012 for 10-11 year olds (CNC III)

Do you have a child who enjoys playing outside? Do you have a child that's curious about the wildlife in your backyard? Or maybe you have a youngster who enjoys learning and discovering nature through exploration. If this sounds like someone you know, then you should consider registering them for the Warren



County Conservation District's Children's Nature Camp.

What is Children's Nature Camp? Children's Nature Camp (CNC) is a camp designed for children where they can learn and discover the uniqueness and importance of plants and animals in our local environment. We engage them in fun and interactive hands-on lessons, activities, crafts, stories, and games. Each day, the campers will be introduced to new memorable learning experiences in a variety of outdoor situations.

When and where will CNC be held? CNC will be held from 9:00 a.m. till 2:00 p.m. at the pavilion of the Hatch Run Conservation Demonstration Area on Hatch Run Road; a quarter mile past PennDOT's Driver's License Center. You must provide transportation for your own child.

How much does it cost? There is a \$35.00 fee to attend CNC. This fee covers the cost of the special guest speakers and basic materials and supplies for camp. Refund of camp tuition due to cancellations will be at the discretion of the Conservation District.

What will my child need to bring? Each day, your child will be responsible for bringing a packed lunch. (The \$35.00 fee does not cover their lunches.) Camp will be mostly outdoors, so they should be dressed with shoes for walking and clothes for the weather.



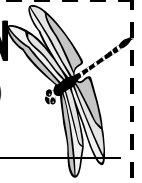
How do I apply? Simply fill out the application form and mail the completed form with a check or money order for \$35.00 per child made out to the Warren County Conservation District. Please use a separate form for each child. You can make additional copies of this form, call the District office for additional forms, or visit the

District's web site (www.wcconservation.net) to print additional forms. We will contact you with further information at a later date. Each camp is limited to a maximum of 20 participants. Applicant selection will be on a first come, first serve basis.



CNC APPLICATION

(PLEASE PRINT CLEARLY)



Name _____

Street _____

City _____

State _____ Zip _____

E-Mail _____

Phone _____ Sex _____

Birth Date _____

Age During Camp _____

School Attended _____

Please check camp attending:

July 9-10 for 6-7 Year Olds

July 12-13 for 8-9 Year Olds

July 17-19 for 10-11 Year Olds

T-Shirt Size (Circle):

Youth Medium Youth Large Adult Small

Adult Medium Adult Large Adult X-Large

Parental Consent

I, _____
(Signature)

(Please Print Name)

hereby give my consent for my son/
daughter, _____
to attend the Children's Nature
Camp at the Hatch Run
Conservation Demonstration Area.

(\$20.00 service charge on all returned checks)

**These camps fill
fast so act
quickly.**

**Application deadline is June 15th for all
camps.**

Mail application form and payment to:

**Warren County Conservation District
210 North Drive, Suite E
Warren, PA 16365**

Youth Conservation Camp

June 19-21, 2012 for 12-14 yr olds

Do you like the outdoors? Do you want to learn about forests, conservation, water, wildlife, and environmental careers? Would you like to learn how to improve wildlife habitats or explore a stream? Then you should consider attending the Warren County Youth Conservation Camp and get hands-on experience in forest management techniques, wildlife habitat improvements, ecology and water quality issues.

The Curriculum: The underlying philosophy of this three-day camp is learning by doing. The majority of the time is spent "in the field" where campers learn about trees and plants, soil, aquatics, ecology, wildlife, farming, and more. Representatives of the PA Fish and Boat Commission, the PA Game Commission, the PA Department of Environmental Protection, the Warren County Council of Sportsmen's Clubs, and the Warren County Conservation District present several programs. This year campers will also be doing an environmental project.

Facility: The Brokenstraw Fish and Game Club serves as the base camp for the three-day event. The club is located on Mead Run Road in Youngsville, PA.

Who Should Attend: Any girl or boy between the ages of 12-14 who has a genuine interest in the outdoors, conservation, and nature. This is a fun and exciting learning experience. The camp is limited to a maximum of 20 participants.

Cost: There is a \$50.00 fee per child to attend the camp. The Warren County Sportsmen's Council and Northern Allegheny Conservation Association cover the remaining costs for meals, lodging, insurance, and program materials. You must provide your own transportation to and from camp.

Scholarships may be available for families with limited income. Contact the Conservation District for more information.

Refund of camp tuition due to cancellations will be at the discretion of the Conservation District. If camp has to be cancelled, due to circumstances beyond our control, and is rescheduled, no refund will be offered.

Volunteer: Are you interested in learning more about our training program for volunteer Teachers Naturalists? Contact the Conservation District for more information.

Application Procedure: Complete the attached application and parental consent form. Please use a separate form for each child. You can make additional copies of this form, call the District office for additional forms, or visit the District's web site (www.wcconservation.net) to print additional forms. Enclose a check or money order for \$50.00 per child made out to the Warren County Conservation District.

Mail application and payment by May 31, 2012 to:

**Warren County Conservation District
210 North Drive, Suite E
Warren, PA 16365**



APPLICATION

(PLEASE PRINT CLEARLY)

YOUTH CONSERVATION CAMP

Name _____

Street _____

City _____

State _____ Zip _____

E-Mail _____

Phone _____ Sex _____

Adult Shirt Size (Circle) S M L XL

Age during camp: _____

School Attended _____

Grade level for 11/12 School Year _____

Parent(s) Name _____
(Please Print)

You will be contacted with further information at a later date.

PARENTAL CONSENT

I, _____
(signature)

hereby give my consent for my son/daughter,
_____ (name)

to attend the Youth Conservation Camp at the
Brokenstraw Fish and Game Club.

APPLICATION DEADLINE: May 31, 2012

(\$20.00 service charge on all returned checks.)



Penn Soil RC&D Relocates Headquarters to Warren

Penn Soil Resource Conservation and Development (RC&D) Council, a 501-c-3 not for profit organization serving eight northwestern PA counties has relocated its office from Clarion to Warren County as of September, 2011. The RC&D Council works with the eight counties (Clarion, Crawford, Erie, Forest, Lawrence, Mercer, Venango, and Warren) County Commissioners and Conservation Districts to support local and regional efforts to work together in solving environmental, economic, and social problems or providing new opportunities to improve our communities in many ways.

Recent RC&D projects that have improved our area include providing assistance in constructing the Big Bend Bird Viewing Platform, facilitating improvements to the Boat Launches on the Allegheny River below the Kinzua Dam and in Tionesta, upgrading the North Country Connector Trail at Chapman State Park, improving the local tourism economy by designing and helping to administer the Allegheny GeoTrail Project and hosting the international geocaching annual event known as GeoWoodstock, serving as a financial agent for the Pennsylvania Kinzua Pathways Group, facilitating the design of a mountain biking trail at Jakes Rocks, and facilitating improvements to the Kinzua Beach to Rimrock Trail.

Currently, Penn Soil RC&D is assisting the Warren County Winterfest Committee with its fundraising efforts and is offering a free winterfest souvenir collectible coin to anyone who makes a charitable contribution of \$10.00 or more to Penn Soil RC&D for the Winterfest event. The coin features several elements of the Winterfest including the polar plunge, geocaching, and the Jim Lobdell Memorial Sled Dog Races. It is about the size of a fifty cent piece and has a nice heavy feel to it. Coin collectors and those who like artwork will really enjoy this collectible souvenir that will help sustain the annual event. As an added bonus, and of interest to geocachers, the coin is trackable on geocaching.com using each coin's unique tracking number. Future versions of the collectible coin may feature other aspects of the popular Winterfest. (See page 9 for more information.)

Penn Soil RC&D is co-located in an office with the Warren County Conservation District, USDA NRCS, and the Conewango Creek Watershed Association at 210 North Drive, Suite E, Warren, PA 16365.

The office is staffed by Wes Ramsey, Executive Director of Penn Soil RC&D on a part-time basis. Call Wes at 814-726-1441 to schedule an appointment.

Bits & Pieces

BEEF FUNDRAISER: Thank you to everyone who supported our grass-fed beef fundraiser. There's a lot of beef out there in freezers ready for people to lead a more healthy lifestyle. If you want to continue eating grass-fed, locally raised beef, please contact the District office and we can help you find a farmer who can meet your needs.

SCHOLARSHIP AVAILABLE: The Warren County Conservation District will be accepting Ralph G. Eckert Scholarship applications until April 1, 2012. The Scholarship is awarded annually by the Warren County Conservation District to a deserving county student planning to continue her/his education in a conservation related field or service. If you need additional information or an application package, please contact the Warren County Conservation District office at 814-726-1441 or www.wcconservation.net. Applications are also available at each high school guidance office or principal's office.

CONSERVATION DISTRICT WEB SITE: All of the District's programs are featured on the site. You can print the Tree Seedling and Plant Sale order form, applications for camps and the Eckert Scholarship, forms for Chapter 102 and 105, and forms for the Dirt and Gravel Roads program. Lots of nice photos too! Visit www.wcconservation.net.

PAVILION RENTAL: The pavilion at the Hatch Run



Conservation Demonstration Area on Hatch Run Road is available for rent. It offers plenty of parking, picnic tables under the pavilion, an outdoor privy, plus the

beauty of Warren County's nature surrounding you. The cost is \$25.00 and reservations are needed. Contact the District at 726-1441 to reserve the pavilion for your next picnic or gathering.



McKeever Varga & Senko
Certified Public Accountants
Personal Financial Planners
Business Consultants

JOHN R. SOMMERS
Manor Oak Two, Suite 500
1910 Cochran Rd. ■ Pittsburgh, PA 15220-1102
Telephone: (412) 531-2990 ■ Fax: (412) 531-4793
Email: jsommers@mvs-cpa.com
Website: www.mvs-cpa.com

Winterfest Collectible Coin



The Winterfest Collectible Coin is available now and will be given as a token of appreciation to anyone who makes a tax deductible contribution to Penn Soil RC&D for the Winterfest in the amount of \$10.00 or more. The coins may be reserved for pickup at the Warren Winterfest by mailing your donation to the Penn Soil RC&D office at 210 North Drive, Suite E; Warren, PA 16365. Please make the check payable to Penn Soil RC&D with the Winterfest donation listed in the memo area of your check. If you would like your coin mailed to you, please add \$5.00 to cover shipping & handling cost. As an alternative, you may make your donation and receive your coin in person at the Penn Soil RC&D office while the coin supply lasts. There are a limited number of coins available. Penn Soil RC&D's phone number is 814-726-1441.

SPRING TIME

By Jude



*Plant a seed and watch it grow
Sprouting life up through the ground
Spreading its leaves in majestic wonder
Combating all the elements of nature.*

*Vegetables and fruits of delectable flavor
Feeding the world with a bountiful harvest
Fragrant flowers blooming with grace
Painting the earth with a rainbow of color.*

*Spring is the season the world comes alive
It brightens one's life and freshens the air
The mountains, valleys, and plains rejoice
In splendid hues and the peach of nature.*

Answers to Trivia Questions

1. 6 billion
2. 200-1000 years
3. 2 million
4. 130
5. 500,000
6. 20
7. 1
8. The Dodo Bird
9. Christopher Columbus

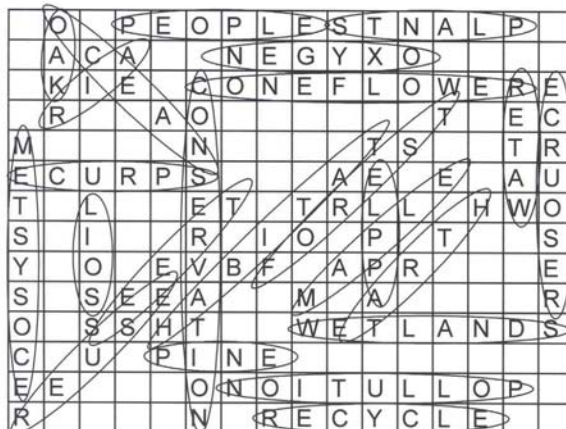
Manure Management and Agricultural Erosion and Sediment Control Plans

Every farm in Pennsylvania that generates and/or land applies manure or agricultural process waste water (generated on the farm or received from an importer), regardless of size, is required to have and implement a written Manure Management Plan. A Manure Management Plan is required even if you have one horse. This includes manure and agricultural process wastewater application by various types of equipment and/or direct application of manure by animals on pastures and in Animal Concentration Areas (ACAs). In other words, farms that do not mechanically apply manure but which do have pastures or ACAs still need a Manure Management Plan. The Manure Management Plan must be written and kept on site. There are no submission or approval requirements and the plan can be written by the farmer or other non-certified individual.

Written Erosion and Sediment (E&S) Control plans are required for activities disturbing 5,000 square feet or more of land. This means that all agricultural plowing and tilling, including "No-Till" activities and all Animal Heavy Use Areas are required to have an Ag E&S plan. A NRCS Conservation Plan with best management practices covering crop fields near stream areas and Animal Heavy Use Areas may meet these requirements. These plans must also be kept on site or at the farmstead. Assistance with your Conservation Plan or Ag E&S plan can be obtained from the local NRCS office or a private consultant.

The Warren County Conservation District in cooperation with the local NRCS office is planning a series of workshops related to these planning requirements. Additional information and planning guidance will be provided. Please contact the Conservation District at (814) 726-1441 or hwilcox@wcconservation.net for more information about the upcoming workshops or for more information about Manure Management or Ag E&S Planning.

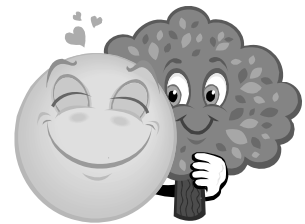
Answers to puzzle



Kid's Conservation Corner

CIRCLE THE WORD PUZZLE

R	O	P	P	E	O	P	L	E	S	T	N	A	L	P	O
S	A	C	A	K	L	N	E	G	Y	X	O	L	M	M	T
L	K	I	E	X	C	O	N	E	F	L	O	W	E	R	E
R	R	I	P	A	O	U	Y	T	V	B	R	T	E	E	C
M	O	L	L	U	N	I	F	F	E	T	S	X	Z	T	R
E	C	U	R	P	S	T	U	E	A	E	P	E	I	A	U
T	K	L	B	N	E	T	B	T	R	L	L	J	H	W	O
S	S	I	J	B	R	Y	I	O	C	P	X	T	W	E	S
Y	P	O	B	E	V	B	F	S	A	P	R	U	C	S	E
S	J	S	E	E	A	W	D	M	O	A	N	P	M	I	R
O	N	S	S	H	T	G	T	W	E	T	L	A	N	D	S
C	O	U	H	P	I	N	E	E	R	S	A	I	V	X	L
E	E	F	V	C	O	N	O	I	T	U	L	L	O	P	F
R	E	S	S	P	N	R	R	E	C	Y	C	L	E	L	S








- | | |
|--------------|-----------|
| Air | People |
| Apple | Pine |
| Coneflower | Plants |
| Conservation | Pollution |
| Earth | Recycle |
| Ecosystem | Resource |
| Forest | Reuse |
| Habitat | Soil |
| Maple | Spruce |
| Oak | Trees |
| Ocean | Water |
| Oxygen | Wetlands |

TRIVIA

1. One cup of soil can hold how many organisms?
2. How long does it take to make an inch of topsoil?
3. How many flowers must a bee tap to make a pound of honey?
4. One farmer produces enough food for how many people?
5. If everyone in the U.S. recycled their Sunday newspaper each week, how many trees per week would be saved?
6. The amount of energy used to make one aluminum soda can from virgin metal could have produced how many cans from recycled aluminum?
7. How many of every 1,000 species that have ever lived on Earth are still alive?
8. What bird, extinct by 1681, was named for the Portuguese word for "stupid"?
9. What explorer introduced pigs to North America?

Trivia questions found at: nracs.usda.gov, montgomery.nj.us/twpcommittee/envquiz1.pdf, and trivia.playing.com

*I
keep
the water
clean and also
clean your air.
You would miss me if I
wasn't there. I provide shelter
for all those who need it. If I fall down
I'm also a place to sit. I can provide food,
depending on the type, that provides nourishment
when it's nice and ripe.
I provide medicine to those who
are sick. Really it's true; this isn't a trick.
I provide shade when the weather's hot and sunny.
I provide a place for bees to make their honey. I protect
the soil on wet rainy days. I have many uses in my providing way.
What could I be,
with uses such
as these? I'm
sure you know
now, I am a tree.*

By Jean Gomory

2012 Tree Seedling & Plant Sale

NAME _____ HOME PHONE _____
 ADDRESS _____ WORK PHONE _____
 CITY _____ STATE _____ ZIP _____
 E-MAIL ADDRESS _____
 (To remind you of pick-up.) _____

FOR DISTRICT USE ONLY	
ORDER # _____	
DATE RCVD _____	
CHECK # _____	
AMOUNT _____	

SPECIES	SIZE	25 EVERGREENS FOR	50 EVERGREENS FOR	100 EVERGREENS FOR	TOTAL # ORDERED	TOTAL COST
EVERGREENS (Bare Root)						
DOUGLAS FIR (3-0)	10-20"	18.00	28.00	46.00		
NORWAY SPRUCE (3-0)	10-20"	18.00	28.00	46.00		
POTTED PLANTS						
		EACH	PER 3	PER 5		
PURPLE CONEFLOWER, Purple	1 Gal.	8.25	23.25	37.50		
FALSE SUNFLOWER, Yellow	1 Gal.	8.25	23.25	37.50		
CARDINAL FLOWER, Red	1 Gal.	8.25	23.25	37.50		
FRUIT (Bare Root)						
		EACH	PER 3	PER 10		
MACOUN APPLE	4-6'	16.50	47.00	145.00		
FULFORD GALA APPLE	4-6'	16.50	47.00	145.00		
RELIANCE PEACH	4-6'	16.50	47.00	145.00		
		EACH	PER 3	PER 5		
BLUECROP BLUEBERRY, (2-3 Yr)	12-18"	9.75	27.75	43.75		
BLUEJAY BLUEBERRY, (2-3 Yr)	12-18"	9.75	27.75	43.75		
TREES & SHRUBS (Bare Root)						
		EACH	PER 5	PER 10		
OLD-FASHIONED LILAC	1-2'	2.25	10.25	19.00		
AMERICAN PLUM	2-4'	2.50	11.25	20.00		
SUGAR MAPLE	3-4'	2.50	11.25	20.00		
PIN OAK	5-6'	3.00	13.75	25.00		
MISC						
USED TREE SHELTERS	4-5'	\$1.00/each				

Please initial here when order is
 picked up. _____

TOTAL ORDER _____

**\$20.00 SERVICE CHARGE ON
 ALL RETURNED CHECKS**

- ◆ ALL ORDERS MUST BE PREPAID BY MARCH 30, 2012 ← DUE DATE
- ◆ SALES TAX IS INCLUDED IN THE PRICES ABOVE
- ◆ MAKE CHECKS PAYABLE TO THE WARREN COUNTY CONSERVATION DISTRICT
- ◆ MAIL TO: 210 NORTH DRIVE, SUITE E, WARREN, PA 16365

Conservation Newsletter
Warren County Conservation District
210 North Drive, Suite E
Warren, PA 16365

NON-PROFIT ORG.
U.S. POSTAGE
PAID
WARREN, PA
16365
PERMIT NO. 85

OR CURRENT RESIDENT

Tree Seedling & Plant Sale Information Enclosed

ALSO IN THIS ISSUE:
Children's Nature Camp
Youth Conservation Camp

Do we have your correct address, are you receiving this newsletter, but no longer use it, or receiving more than one copy? Please conserve paper and call us. THANKS!

